

pps-3,6,12

the pacesetter in quality prefab roof products



245 eisenhower lane south • lombard, illinois 60148
630.705.1920 • 800.243.3018 • fax 630.705.1930
www.patecurbs.com • e-mail: sales@patecurbs.com

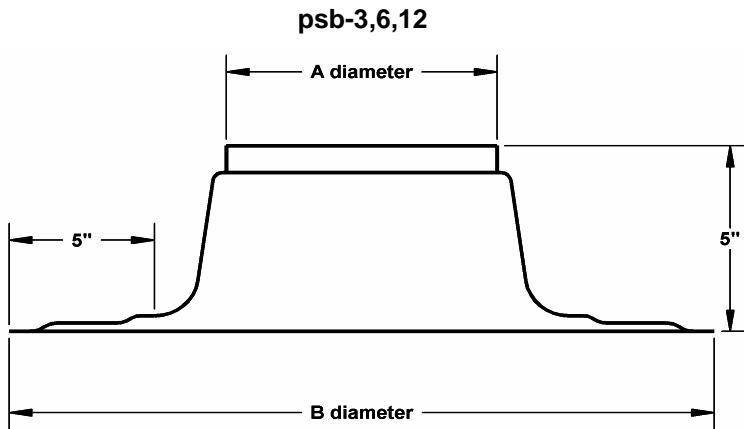
pate pipe seal assemblies

standard construction

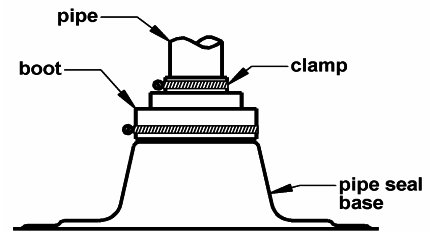
One piece spun aluminum base with full five inch sloped roof surface, flange, graduated step pvc boot and adjustable stainless steel clamps.

p.o. no. _____
customer _____
project _____
location _____
architect _____
engineer _____

pate pipe seal assemblies



pps-3 assembly shown



pipe seal base and boot packages

pipe seal base	A dia.	B dia.
psb-3	3 1/2"	16"
psb-6	6 1/2"	20"
psb-12	12"	23"

NOTE: sizes listed are actual O.D.


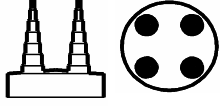
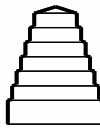
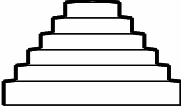
pps-3 1 pipe: 1/2" - 2 7/8" O.D.

pps-6 1 pipe: 3" - 5 1/2" O.D.

pps-6q6 for up to 4 pipes: 3/8" - 2" O.D.

pps-12 1 pipe: 6" - 10 3/4" O.D.

pipe seal assembly requirements

quantity	pipe seal assembly	components			b-3		b-q6	
		base	boot	clamps		1 module graduated step 3 1/2" boot for 1/2" - 2 7/8" actual O.D. pipe		4 module graduated step 6 1/2" boot for 3/8" - 2" actual O.D. pipe
	pps-3	psb-3	b-3	2 clamps				
	pps-6	psb-6	b-6	2 clamps				
	pps-6q6	psb-6	b-q6	5 clamps				
	pps-12	psb-3	b-12	2 clamps		1 module graduated step 6 1/2" boot for 3" - 5" actual O.D. pipe		1 module graduated step 12" boot for 6" - 10 3/4" actual O.D. pipe