

pc-ib

the pacesetter in quality prefab roof products



245 eisenhower lane south • lombard, illinois 60148
 630.705.1920 • 800.243.3018 • fax 630.705.1930
 www.patecurbs.com • e-mail: sales@patecurbs.com

**pate
isolation base**

standard construction

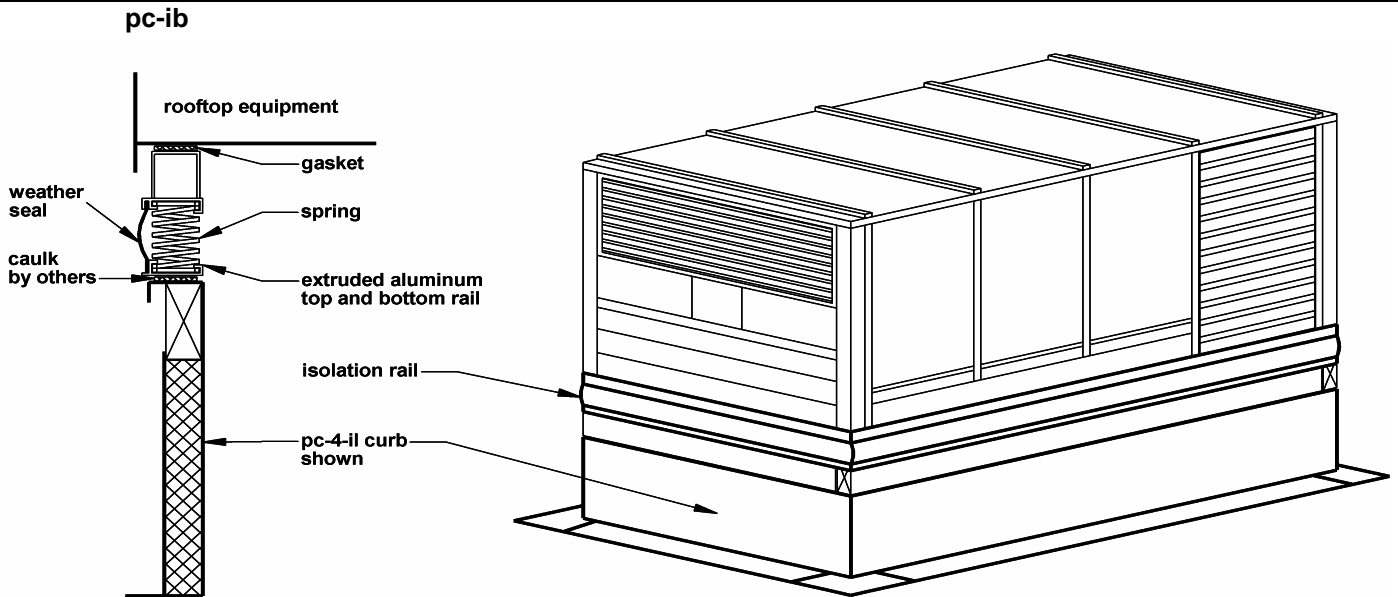
Extruded aluminum upper and lower members with laterally stable 1" or 2" static deflection springs, wind and seismic restraints, continuous flexible weather seal. Isolation rail assemblies are available as pre-assembled units or knocked down for field assembly. Curbs ship separate, allowing roofing to be completed prior to isolation rail arrival.

p.o. no. _____
 customer _____

 project _____
 location _____

 architect _____
 engineer _____

pate isolation base



isolation base requirements

quantity	static deflection	assembled unit or knocked down	rooftop equipment manufacturer and model	rooftop equipment weight	tag