

mprs-1,2,5

the pacesetter in quality prefab roof products



245 eisenhower lane south • lombard, illinois 60148
630.705.1920 • 800.243.3018 • fax 630.705.1930
www.patecurbs.com • e-mail: sales@patecurbs.com

pate multiple heavy duty pipe roller support

standard construction

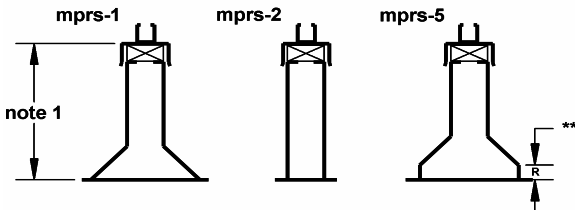
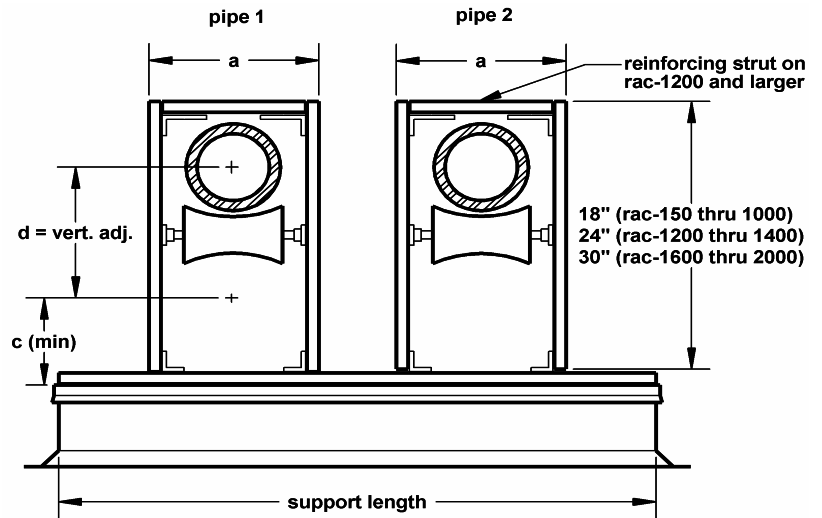
Equipment support from heavy ga. Galvanized steel, continuous welded corner seams, 2 x 4 treated wood nailer, heavy ga. Galvanized steel counter-flashing with galvanized steel channel track attached. Roller assembly consists of galvanized steel channel track, galvanized steel fittings, washers and nuts and painted cast iron roller. Assembly permits both vertical and horizontal adjustment according to the chart below.

p.o. no. _____
customer _____
project _____
location _____
architect _____
engineer _____

pate heavy duty pipe roller supports

pipe size	rac #	a	c	d
1" - 1 1/2"	rac-150	6"	4 1/4"	13"
2" - 3 1/2"	rac-350	7"	5 1/4"	9 1/2"
4" - 6"	rac-600	9"	7 1/4"	7 1/2"
8" - 10"	rac-1000	13 3/4"	11 7/8"	2"
12"	rac-1200	15 3/4"	13 7/8"	4 1/2"
14"	rac-1400	17 3/4"	15 7/8"	3 1/4"
16"	rac-1600	19 3/4"	17 7/8"	6 1/4"
18"	rac-1800	21 3/4"	19 7/8"	4 1/4"
20"	rac-2000	23 3/4"	21 7/8"	2"

mprs-1 with two pipes supports shown



- NOTES: 1. standard support height: mprs-1 = 8"
mprs-2 = 12"
mprs-5 = 9 1/2" (**R = 1 1/2")
2. rac = roller assembly complete

IMPORTANT: All fasteners must be torqued to 40 ft./lbs.

pipe roller support requirements

quantity	mprs style	pipe 1 rac #	pipe 2 rac #	support length	nailer width	support height (see note 1)	**raised cant height	# of pipes per rail	tag